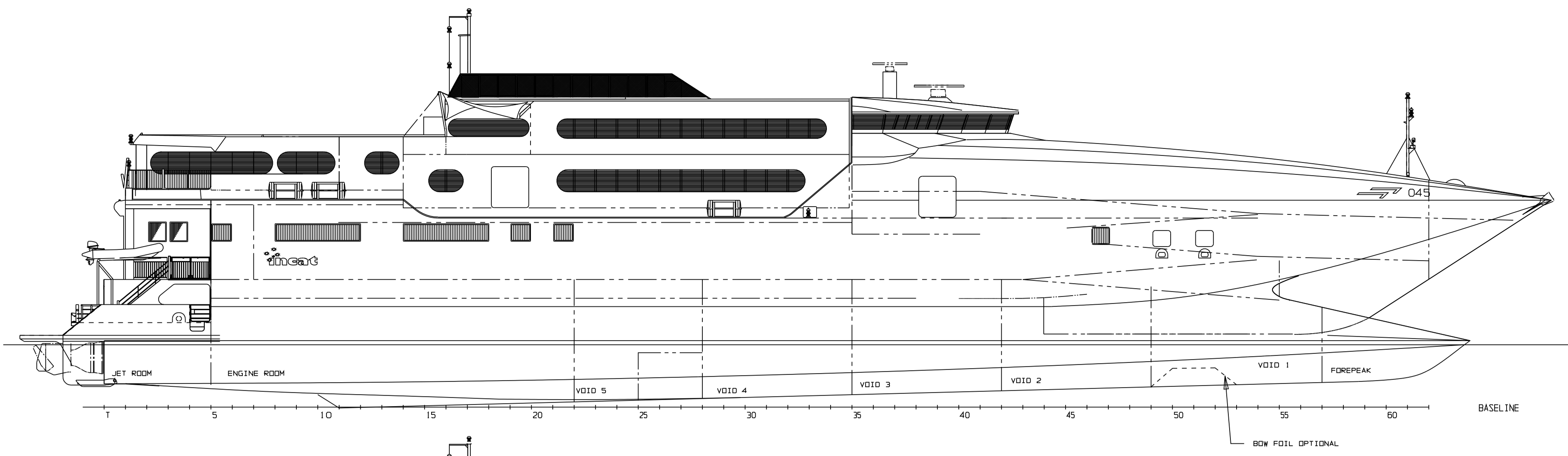
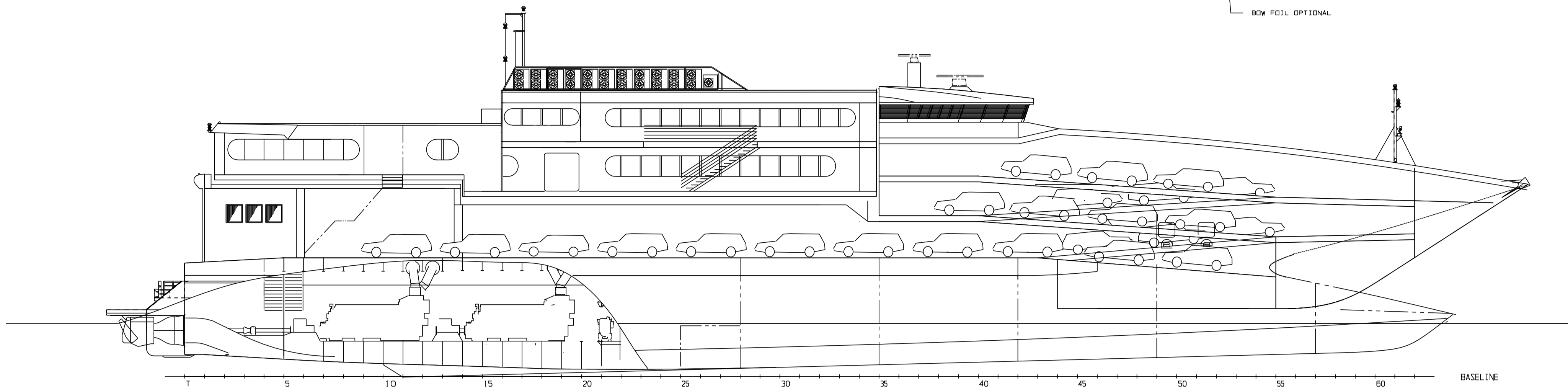


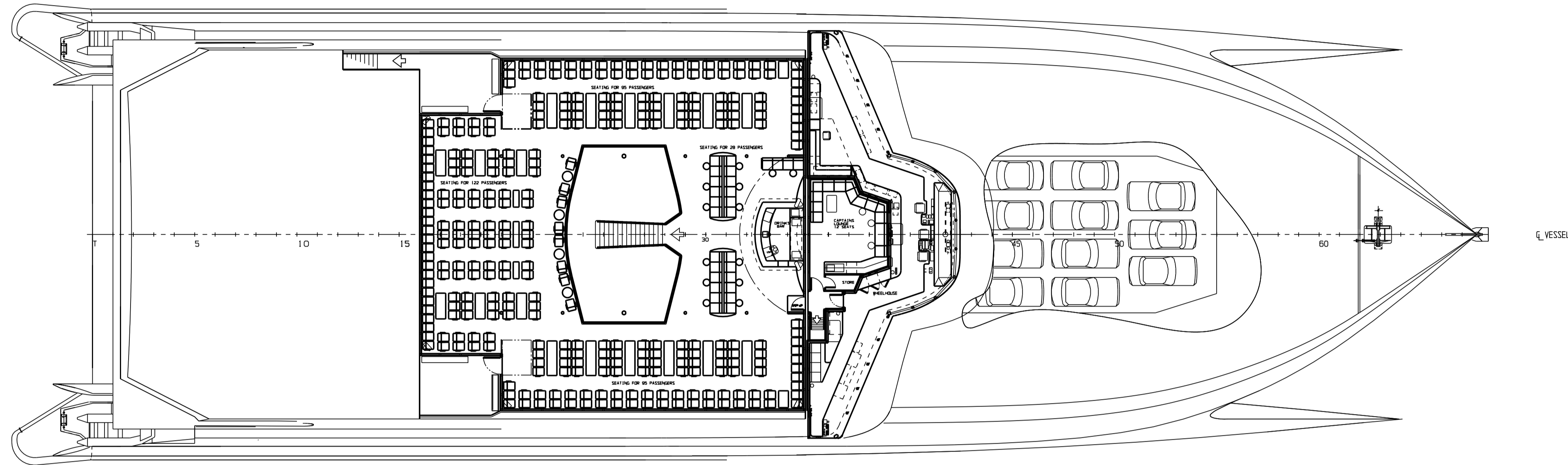
OUTBOARD PROFILE



INBOARD PROFILE



TIER 3 PLAN



PRINCIPLE PARTICULARS

LENGTH OVERALL (excluding fenders) 86.27m
 WATERLINE LENGTH 76.71m
 BEAM OVERALL (moulded) 26.00m
 HULL BEAM (moulded) 4.33m
 HULL LENGTH OVERALL 81.34m
 HULL C.L. TO VESSEL C.L. 10.83m

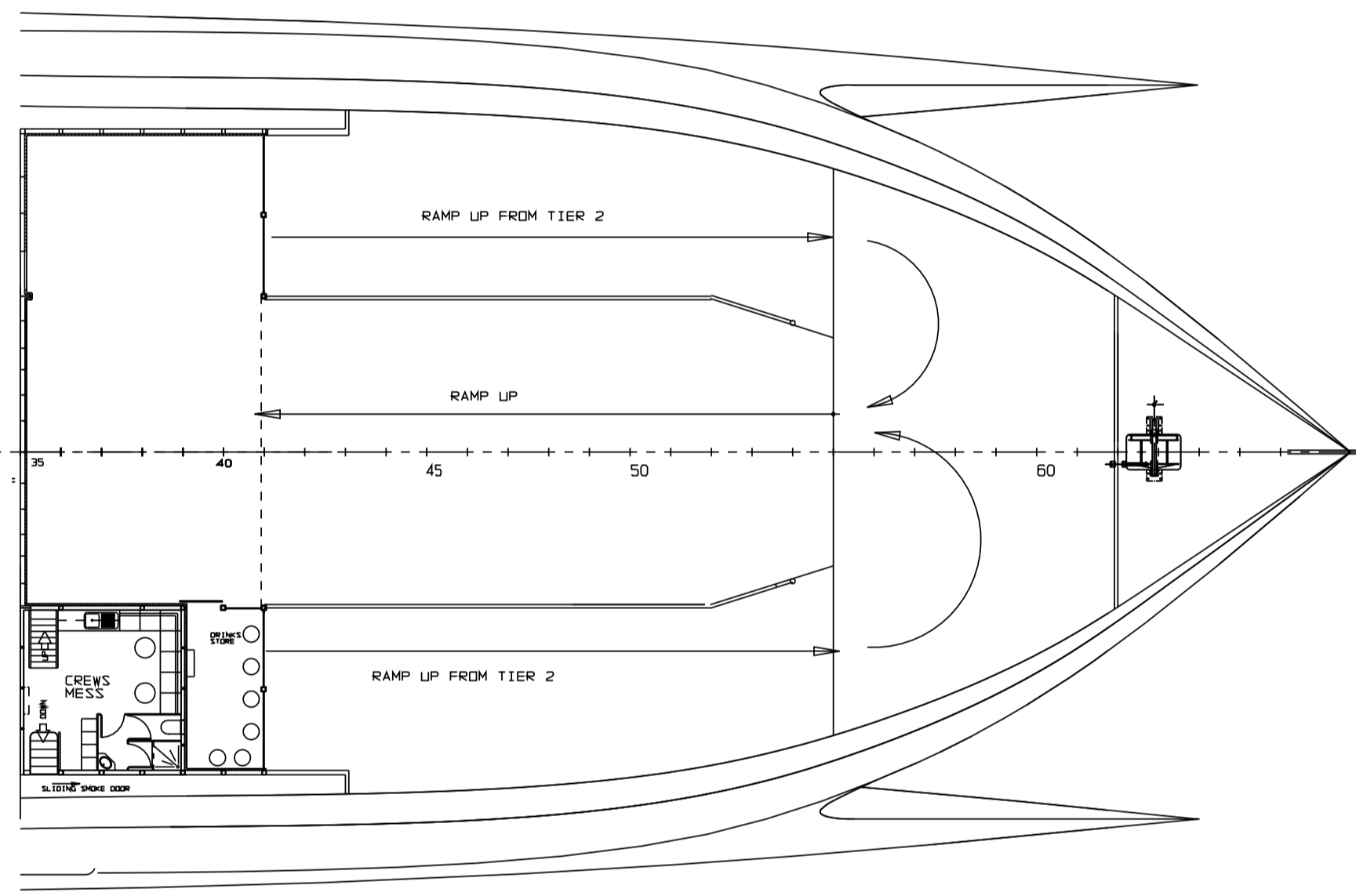
VEHICLE / FREIGHT SPACES

TIER 1 = approx. 75 cars (4.5 x 2.3m)
 16 small trucks (6.5m.L x 2.5m.W x 2.85m.H)
 4 buses
 RAMP B & C = approx. 50 cars (4.5m x 2.5m)
 RAMP D = approx. 18 cars (4.3m x 2.25m)
 TOTAL = max. 143 cars & approx. 16 small trucks & 4 buses.
 (subject to combined gross vehicle masses)

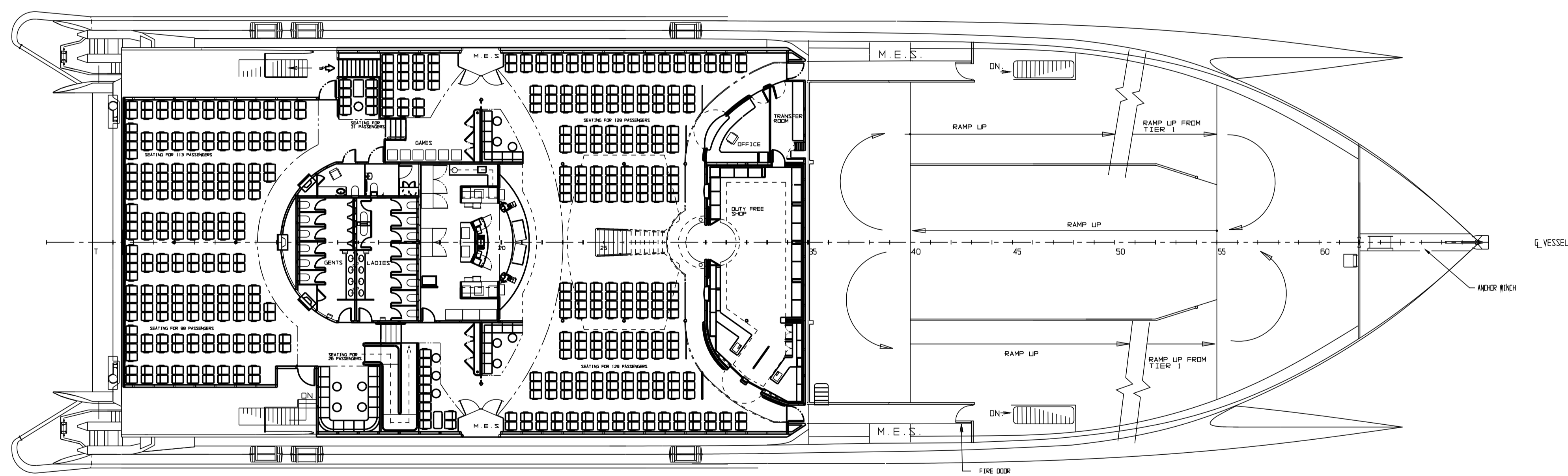
PASSENGERS / CREW

TIER 2 PASSENGERS = 526 persons
 TIER 3 PASSENGER = 340 persons
 CAPTAIN'S LOUNGE = 12 persons
 CREW MEMBERS = 22 persons
 TOTAL = 900 persons (including 22 crew)

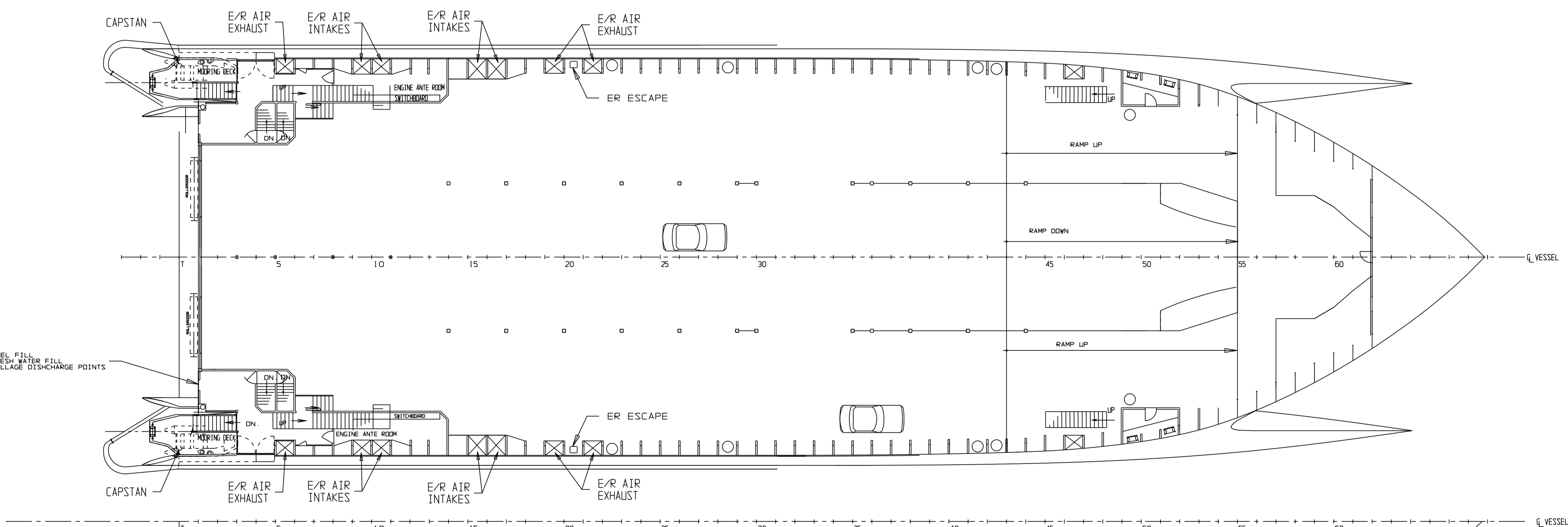
CELLAR AND CREWS
 MESS LOCATED UNDER
 WHEELHOUSE



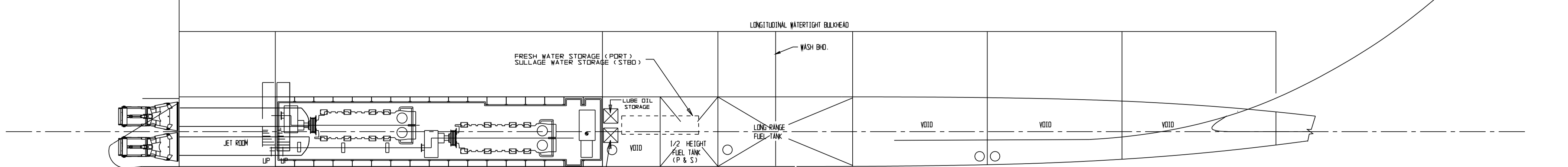
TIER 2 PLAN



TIER 1 PLAN



PLAN BELOW DECKS



C	19 JUNE '97	J.B.	STERN RAMPS REMOVED, RESCUE BOATS RELOCATED
F	6 JUNE '97	J.	OUTDOOR A/C FRAME STRUCTURE UPDATED/ STERN RAMPS ADDED
H	14/5/97	J.	BOATY-FREE SHOPS OFFICE/TRANSFER-RM-DETAILS UPDATED
O	8 MAY '97	CAP	LIFERAFTS REPOSITIONED
C	8/4/97	J.	TIER 2 AND 3 PASSENGER SEATS UPDATED TO 900 PASSENGERS, INC CREW
B	25.2 '97	J.M.	UPDATED SEATING ARRANG. T. ATRIUM, SHOPS, CAPT'S LOUNGE, DELETE STORE
A	20-12-96	MGR	UPDATED TO STANDARD ARRANGEMENT

THIS DRAWING AND THE INFORMATION CONTAINED HEREIN IS SUPPLIED ON THE UNDERSTANDING THAT IT IS THE EXCLUSIVE PROPERTY OF INCAT AUSTRALIA PTY LTD. AND MUST NOT BE USED OR REPRODUCED IN WHOLE OR IN PART, WITHOUT PERMISSION IN WRITING.

TITLE
 86M WAVE PIERCING
 CATAMARAN FERRY
 STANDARD GENERAL ARRANGEMENT

DRAWN BY
 GLODYLE
 CHECKED BY
 DATE
 02 AUGUST 95
 ORG. No 045-09-32-001
 REV. G

